

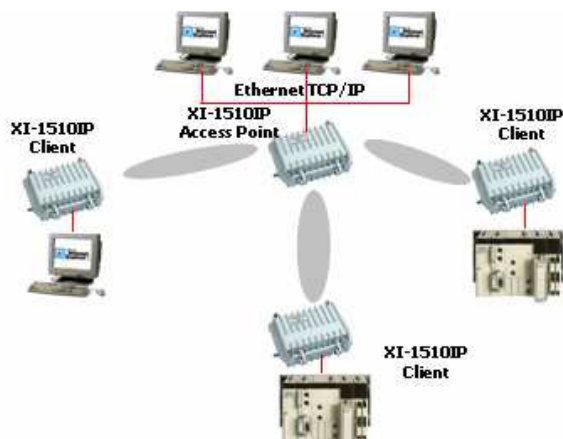
- IEEE 802.11b (Wi-Fi)
- Access Point, Repeater, Bridge and Router
- Infrastructure Mode
- Weatherproof enclosure
- MAC address filtering
- NAT/PAT features
- WEP 64 or 128-bit encryption for network privacy and security
- Power supply through Ethernet cable (PoE)
- Diversity mode for antennas (Option)
- Automatic reset
- Configuration with Windows-based utility or Web browser
- Designed for industrial environment



The **XI-1510IP** Wi-Fi interface is designed for applications requiring sturdiness and reliability in industrial environment. It is fully compliant with the **IEEE 802.11b** standard and with its RJ45 connector, it enables communication between industrial Ethernet devices (PCs, PLCs, I/Os, CNCs, displays, etc.) through a wireless Ethernet structure using the 2.4GHz band in DSSS. One external antenna (or two in optional diversity mode) can be connected to its SMA connector.

Its installation is very simple: Windows-based utility or Web browser for configuration and management, power supply through Ethernet cable (802.3af standard). Its metal enclosure, compact and weatherproof, is designed for outdoor as well as for indoor installation, in humid and dusty environment.

This product has been successfully tested with industrial Ethernet protocols (PLCs from Schneider, Siemens, Allen Bradley, ...).



SPECIFICATIONS

RADIO INTERFACE

- 2,4 GHz band (2.4 to 2.4835 GHz)
- IEEE 802.11b standard (Wi-Fi)
- EIRP : 20 dB (100 mW)
- Sensibility in reception : -90 dBm @11 Mbps

ETHERNET INTERFACE

- 1 RJ45 port
- IEEE802.3af standard (10/100BaseT)

SUPPORTED PROTOCOLS

- TCP/IP
- IPX
- NetBEUI
- SNMP

MODE

- Point d'accès (AP)
- Répéteur inter-bâtiment (PxP)
- Adaptateur Station (SA)

NETWORK PRIVACY & SECURITY

- 64 or 128-bit WEP encryption
- MAC address filtering

POWER SUPPLY

- PoE (Power Over Ethernet)
- Consumption : 400 mA@12 VCC (Max.)

ENCLOSURE

- IP 65 metal case
- Wall or pole mounting
- Dimensions (hwxwd) : 140x190x85 mm
- Weight : 900 g approx.

ANTENNA

- 1 N female antenna connector

ENVIRONMENT

- Operating temp. : -20 to +55°C
- Storage temp. : -30 to +70°C
- Humidity : 0 to 100% non-condensing

REGULATORY APPROVALS

- CEM 89/336 guidelines (pending)
- EN55022 Class B (pending)
- EN55082-1 Class B (pending)
- EN60950 Low power (pending)
- CE Approval (pending)

LEDS AND MISCELLANEOUS

- Internal power LED
- Internal Ethernet LED (RJ45)

CONFIGURATION AND MANAGEMENT

- Windows-based utility or Web browser
- SNMP agent and SNMP MIB

